

# Ikegami

*Tapeless Solution*

# **DNS-33W** Editcam3

**3rd Generation Editcam**



**PRELIMINARY**

# DNS-33W Editcam3

## Ikegami Tapeless Solution

Ikegami broke through with a tape-less solution in 1995 as a pioneer in the broadcast market. Ikegami's disk recording know-how and extensive camera experience have led to the DNS-33W, the latest Editcam model.

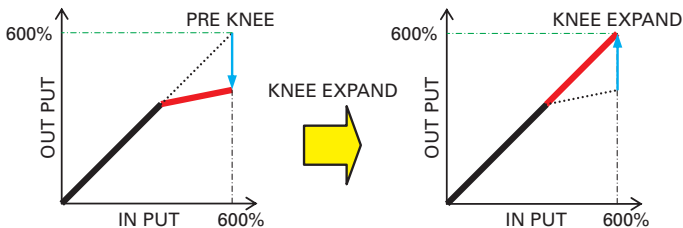
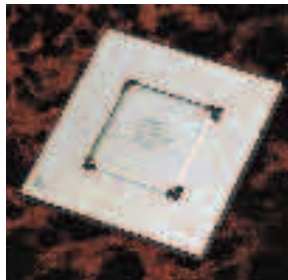
The DNS-33W achieves real nonlinear acquisition. After recording to the FieldPak2 removable non-linear media, video clips can be accessed directly and edited by Avid NLEs, such as Avid MC/NC Adrenaline, Xpress PRO and Xpress DV.

There is no requirement for the time consuming digitizing procedure. Ikegami's Editcam solution releases editors from wasting time digitizing footage.



### 12 bit A/D and Evolutional Digital Processing

Using advanced digital signal processing ICs, precision designed at 0.18 $\mu$ m rule, the video signals are digitized with 12-bit A/D conversion and up to 38-bit internal digital processing. Full digital processing by integrated circuits ensures stable and repeatable high-quality pictures with very low power consumption.



### S/N 67dB

And also High S/N ratios of 67dB for NTSC and 65dB for PAL are achieved. Superb high-quality pictures, with excellent S/N ratio, are obtained during all operating conditions since processing such as white shading, gamma and DTL are all performed digitally. The color reproduction in low light areas is greatly improved thanks to 12-bit A/D conversion.

### AIT CCD

Newly developed AIT(Advanced Interline Transfer) CCDs offer high sensitivity of f11 and very low smear level of -135dB. This CCD achieves a high resolution of 750 TV lines.

### ECC (Electric Color Compensation) Filter

The DNS-33W equipped with ECC filter (3200k / 4300k / 6300k / 8000k) for replacement of optical filter.

### Wide Sensitivity Range Including Hyper Gain

With a wide sensitivity range and twelve (12) gain settings, the operating range is greatly extended. The Hyper Gain of +48dB allows a minimum illumination of 0.03 lux.



### Clear VF DTL function

This function makes a difference in the edging of the image exclusively in the viewfinder, to make the precise point of focus easier to find, and to make it easier for the cameraperson to focus.



## Future Migration Path for FieldPak2



FieldPak2 (Hard Disk)



RAMPak (Flash Memory)

The standard FieldPak2 employs a hard disk drive, however, other non-linear media can be readily installed. FieldPak2 has the capability to use Solid-state Memory such as Flash Memory, or other new technology. Customers will be able to use the most cost-effective media as it becomes available.

## New Features

### HIGH PICTURE QUALITY

- Employs AIT CCDs and the latest DSP ASIC
- 12-bit A/D converters

### EASY OPERATION

- Employs color LCD viewer and display
- Newly designed chassis with good balance
- Supports optional TRIAX operation
- Optional SDI output
- Optional IEEE1394 output (Video Output only)
- External Video Recording (Composite Input)
- 4ch audio recording
- UNI-SLOT for integrated wireless receiver or video transmitter

### RELIABILITY

- New more reliable eject mechanism
- Very reliable digital processing in single ASIC (Chip C4)

## Disk Recording Features

### [ RetroLoop ]

The RetroLoop function avoids missing a critical shot since the recorder is always ready for the decisive moment. Video and audio are temporarily stored in a buffer on the disk drive for a selected period from 5 to 490 seconds. Even though the cameraman presses the REC trigger after the event, Editcam has been storing images from the selected period of time before the trigger was pressed.

### [ Time Lapse Recording ]

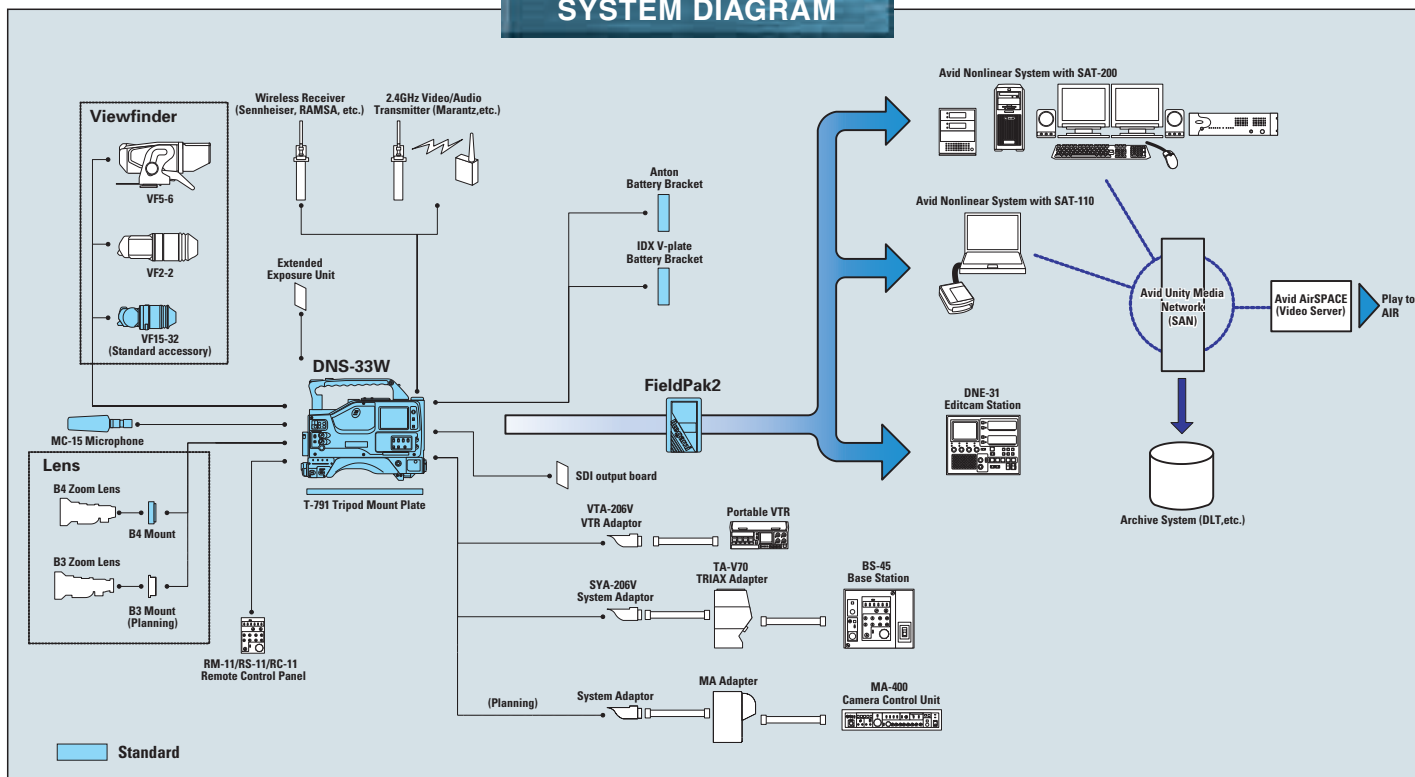
Editcam will record images with a selected interval. This function is useful for tracking the blooming of flowers, the movement of clouds, and other slow-moving events.

### [ Intelligent Recording ]

Even when Editcam is in playback mode, it will automatically search for recording space on the disk. The operator can start recording at anytime.



## SYSTEM DIAGRAM



## SPECIFICATIONS

### ■ Camera Section

Image Sensor	2/3-inch 520,000 pixel CCD53 (NTSC) 2/3-inch 600,000 pixel CCD53 (PAL)
Sensitivity	F11 at 2000lx
Minimum Illumination	0.03lx (F1.4, +48dB)
S/N Ratio	67dB (NTSC)/65dB (PAL)
Horizontal Resolution	750TVL
Registration	less than 0.02%
Smear Level	-135dB (measured at 100,000x lighting condition)
Quantization Bit	12-bits
Gain Selection	-3, 0, +3, +6, +9, +12, +18, +30, +36, +42, +48
Optical Filter	100%, 25%, 6.2%, 1.6%
Electric Filter	3200K, 4300K, 6300K, 8000K
Shutter	1/60 (Off), 1/100, 1/120, 1/250, 1/500, 1/1000, 1/2000 sec *1/50 in PAL version instead of 1/60
Variable Shutter	1/7867 to 1/60.5 sec (NTSC) 1/7812 to 1/50.4 sec (PAL)

### ■ Recording Section

Video Signal	NTSC/PAL
Video Compression	JFIF (3:1/10:1), DV25, *DV50, *IMX (*Option)
Typical Recording Time	180min. (40GB FieldPak2 at DV25)
Video PGM Output	BNC, 75ohm, 1Vp-p
Video MON Output	BNC, 75ohm, 1Vp-p
Audio Channel	4 channels
Audio Sampling Rate	16-bits, 48KHz/44.1KHz

### ■ Common Section

Power Consumption	27W approx.
Ambient Temperature	0 to 40 degree C/+32 to 104 degree F (operating spec)
Dimensions	W1385H2505D320mm/ W5.485H9.845D12.6inches
Weight	4.5kg/9.92lb approx.

Design and specifications are subject to change without notice.

H46A044-SI-F1.5 Printed in Japan

**Ikegami** IKEGAMI ELECTRONICS (U.S.A.), INC. ■ URL <http://www.ikegami.com>

**HEADQUARTERS** 37 BROOK AVENUE, MAYWOOD, NJ 07607  
Phone: (201) 368-9171 Fax: (201) 569-1626

**WEST COAST OFFICE** 2631 MANHATTAN BEACH BLVD., REDONDO BEACH, CA 90278 Phone: (310) 297-1900 Fax: (310) 536-9550

**SOUTHWEST OFFICE** 526 BLUEBIRD LANE, RED OAK, TX 75154 Phone: (972) 869-2363 Fax: (972) 556-1057

**MIDWEST OFFICE** 747 CHURCH ROAD, UNIT C1 ELMHURST, IL 60126 Phone: (630) 834-9774 Fax: (630) 834-8689

**SOUTHEAST OFFICE** 5200 N.W. 33RD AVENUE, SUITE 111 FORT LAUDERDALE, FL 33309 Phone: (954) 735-2203 Fax: (954) 735-2227